



Dependable Products From People You Trust



OFITE Spectral Gamma Ray Logger

Part No.: 700-410

Instruction Manual

Updated 11/27/2023

Ver. 3

OFI Testing Equipment, Inc.

11302 Steeplecrest Dr. · Houston, Texas · 77065 · U.S.A.
Tele: 832.320.7300 · Fax: 713.880.9886 · www.ofite.com

©Copyright OFITE 2014

Table of Contents

Introduction.....	2
Description.....	2
Specifications	2
Components	3
Quick Start	4
Operation.....	5
Data Export	8
Manual Control	9
Calibration.....	11
<i>Spectral.....</i>	<i>11</i>
<i>Belt.....</i>	<i>16</i>
Software Setup	17
Troubleshooting	21
<i>Belt Adjustment.....</i>	<i>21</i>
<i>Idler Adjustment</i>	<i>22</i>
<i>Limit Switch.....</i>	<i>22</i>
<i>Belt Speed</i>	<i>23</i>
Maintenance.....	24
Warranty and Return Policy	25

Introduction

The natural gamma ray radiation emitted from rocks varies with the lithology. The radiation comes from the radioactive decay of Potassium, Uranium, and Thorium, which are present as trace elements. Shale typically contains more of these elements than clean sandstone or limestone. Generally, formations with higher shale content release more radiation.

A gamma ray well log is a recording of the natural gamma radiation of the formation around the well bore and is almost always run in conjunction with other well logs. Because the gamma ray log does not change with well treatment or production, it can be used to correlate the depths of the other well logs and the core gamma ray log from the same hole.

The OFITE Gamma Ray Core Logger measures the energy level and quantity of the radiation emitted from a core sample and calculates the quantity of each of the elements. The amounts of each of these elements and the total gamma-ray count are then plotted as a function of depth.

Description

To begin a test, the operator arranges the core samples onto the conveyor belt in order of depth. The unit will record background radiation for 15 minutes in order to establish a base reading. Then the conveyor belt pulls the samples through the machine while the computer shows the results on the screen. At the end of the test, the results are graphed and can be printed or exported. The total gamma-ray log is also available.

Specifications

Maximum Core Diameter: 6" (15.2 cm)

Maximum Belt Speed: 7 fpm (2.1 mpm)

Gamma Ray Detector Type and Size: NaI 3" × 3" (7.6 cm × 7.6 cm)

Gamma Measurement

- Potassium: ±0.3%
- Thorium: ±6 ppm
- Uranium: ±6 ppm

There are four different types of scan. Each type will have different belt speed and data reporting:

- Total Gamma
 - Speed: 1 ft/min
 - Data: Depth / Total Gamma
- API Gamma
 - Speed: 1 ft/min
 - Data: Depth / API Gamma / Potassium (%) / Uranium (ppm) / Thorium (ppm)
- Spectral Gamma
 - Speed: 0.2 ft/min
 - Data: Depth / Total Gamma / Potassium (%) / Uranium (ppm) / Thorium (ppm)
- Custom
 - Speed: 0.01 ft/min to 2 ft/min
 - Data: Depth / Total Gamma / Potassium (%) / Uranium (ppm) / Thorium (ppm)

System Dimensions: 23.6" × 47.2" × 118.1" (60 cm × 120 cm × 300 cm)

System Weight: 992 lbs (450 kg)

Components

#120-00-033 Pillow Block Bearings, Qty: 3
#700-400-014 Conveyor Belt
#700-400-018 Photo Sensor, Qty: 2
#700-410-068 Calibration Gauge, Sample Size 4.5
#700-410-069 Calibration Gauge, Sample Size 2.375
#700-410-401 Calibration Standard, Potassium
#700-410-402 Calibration Standard, Thorium
#700-410-403 Calibration Standard, Uranium
#700-410-404 Calibration Standard, Background
#900-1908 Desktop Computer
#900-2202 Computer Monitor

Replacement Parts:

#700-400-017 Distance Sensor
#700-400-021 Motor
#700-410-001 Multi-Channel Analyzer

Quick Start

1. Always run a spectral calibration the night before running a Spectral Log test. A spectral calibration is not necessary for the Total Gamma Log test.
2. Place the first core on the belt directly under the sensor. Start with the most shallow core first. Orient the core so that the shallow end goes under the shield first.
3. Click the “Start Test” button on the Main Screen.
4. Enter the well information. This information will print on the well log at the end of the test.
5. Enter the start and end depth.
6. Enter a file name and click OK.
7. Continue to load cores onto the belt.
8. Remove cores as they emerge from the shield. Be sure to replace the core in the proper box and in the correct orientation.
9. When the last core sample has left the shield, click the “Stop” button.



Note

If a core reaches the end of the conveyor, an electronic eye will stop the belt. The software will continue to collect data and correct for the elapsed time.

Operation

Always run a spectral calibration the night before running a Spectral Log test. A spectral calibration is not necessary for a Total Gamma Log test.

1. Place the first core on the belt directly under the sensor. Start with the most shallow core first. Orient the core so that the shallow end goes under the shield first.
2. Click the “Start Test” button on the Main Screen.
3. Enter the well information. This information will print on the well log at the end of the test.
4. Enter the start and end depth.
5. Enter a file name and click OK.

Customer		Log Header	
Field Name	Longitude	File Name	test3
Well Name	Township	Comments	
Well Number	County		
API Well Number	State		
Country			
Start Depth	End Depth		
20	22		

6. Continue to load cores onto the belt.



Tip

Make sure each core is properly aligned on the belt according to its depth in the log. For example, if six inches are missing from the bottom of a core, leave six inches of empty space on the belt between that core and the next.

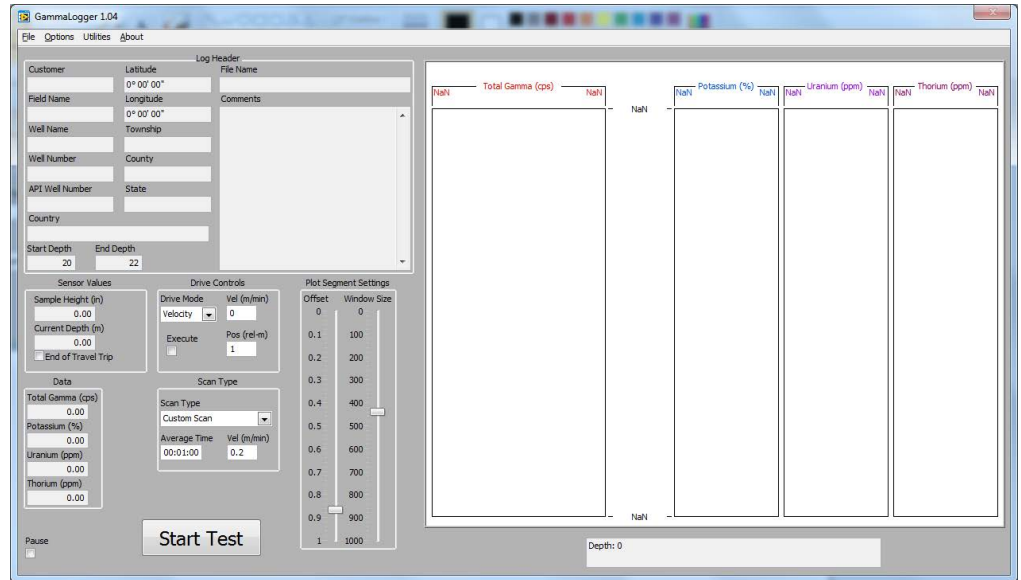
7. Remove cores as they emerge from the shield. Be sure to replace the core in the proper box and in the correct orientation.



Note

If a core reaches the end of the conveyor, an electronic eye will stop the belt. The software will continue to collect data and correct for the elapsed time.

8. When the last core sample has left the shield, click the “Stop” button.



Log Header: This displays the information entered on the Start Test screen.

Drive Controls: These options provide manual control of the belt. Manual control is disabled as soon as a test is started.

- **Drive Mode:**
 - **Position:** Moves the belt a specified number of feet at maximum velocity.
 - **Velocity:** Moves the belt at the specified velocity until stopped.
 - **Vel (ft/min):** The velocity of the belt when Drive Mode is set to Velocity.
 - **Pos (rel-ft):** The distance to move the belt when Drive Mode is set to Position.
 - **Execute:** Check this box to begin moving the belt. Uncheck it to stop the belt.

Scan Type: These options specify what type of test to run.

- **Total Gamma:** The belt will move at one foot per minute and the graph will only show total gamma.
- **Spectral Gamma:** The belt will move at one foot per five minutes and the graph will show both total and spectral gamma.
- **Custom Scan:** Allows you to specify a custom test.
- **Average Time:** The amount of time to accumulate data before recording a data point.
- **Vel (ft/min):** The speed of the belt during the test.

Sensor Values:

Sample Height: Displays the height of the current core

Current Depth: Displays the calculated depth based on the start depth entered at the beginning of the test

End of Travel Trip: Indicates the sensor at the end of the belt has been triggered and the motor has stopped

Data:

Total Gamma (cps): Total gamma measurement (in Counts per Second)

Potassium (%): Concentration of Potassium in the sample

Uranium (ppm): Concentration of Uranium in the sample

Thorium (ppm): Concentration of Thorium in the sample

Plot Segment Settings:

Offset: Move the slider to scroll to different points on the gamma log.

Window Size: Move the slider to show more or less data points on the gamma log.

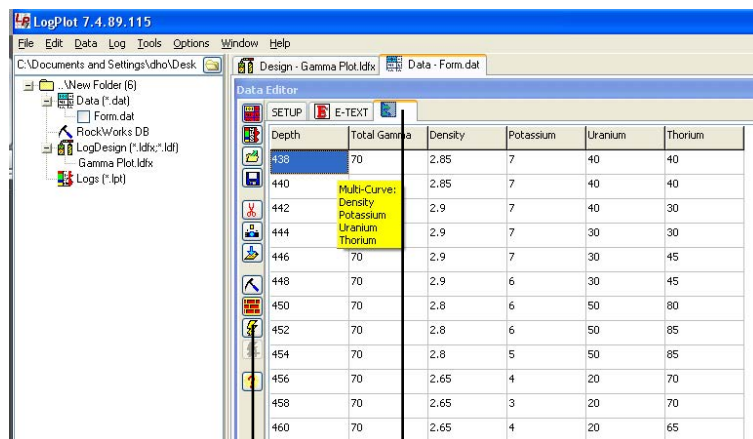
Pause: Check this box to pause the test. The unit will stop collecting data and the belt will stop moving the samples.

Data Export

At the end of a test, the test data will automatically be saved in a file on the computer hard drive. This file can then be imported into the Log Plot software installed on the computer.

For more information, refer to the Log Plot documentation.

1. After the test is complete, open the Log Plot software.
2. Select “Open” from the “File” menu.
3. In the “Files of Type” field select “Log Design (*.ldfx)”. Find the file “Gamma Plot.ldfx” and open it.
4. Select “Open” from the “File” menu again.
5. Find the file “Form.dat” and open it.
6. Open Microsoft Excel and open the data file from the Gamma Ray Logger software. The data file is located in the folder specified on the options screen. See page 17 for details.
7. Select all of the data in the data file and copy it to the clipboard.
8. In the Log Plot software, click the form tab and paste the test data into the form.



Compile Log Button

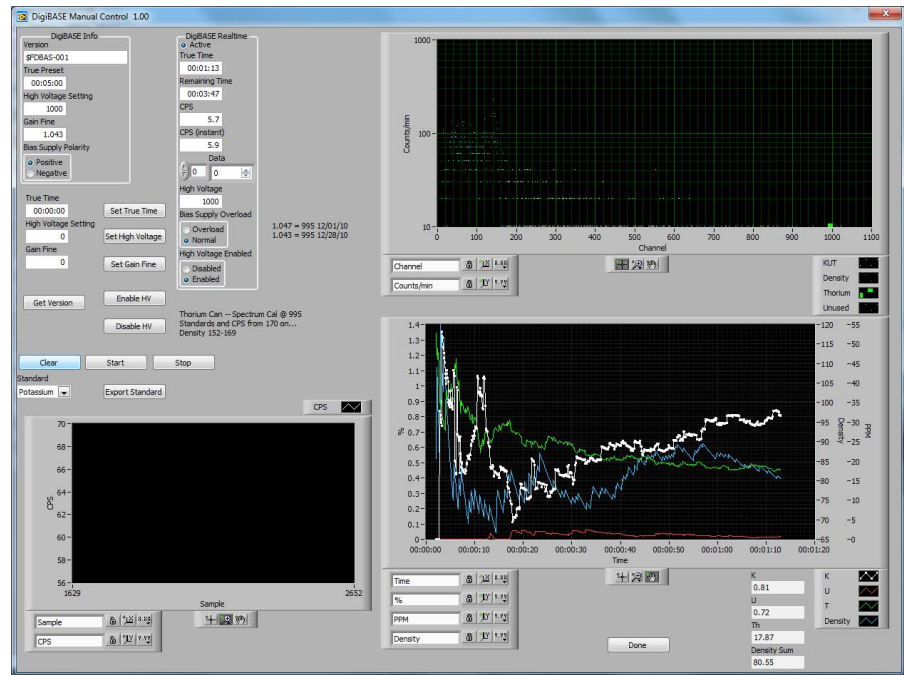
Form Tab

9. Click the “Compile a Log” button.
10. Enter the starting depth in the “Top of Interval” field. Enter the ending depth in the “Bottom of Interval” field. Make sure the “Positive Depths” field is checked.
11. Click OK to compile the log.

Manual Control

The Gamma Ray Logger can also be used to take manual measurements of a single core sample.

1. Select “DigiBASE Manual Control” from the “Options” menu.
2. Place the core under the shield.
3. Click the “Start” button.



DigiBASE Info: This information comes from the DigiBASE scanner within the Gamma Ray Logger. This information is for debugging purposes only.

DigiBASE Realtime: This information shows the current runtime parameters for the DigiBASE scanner. This information is for debugging purposes only.

True Time: The scanner accumulates data over a specified period of time. At the end of this interval, the data is recorded as a single data point and the process starts over. This is called True Time. To set the True Time, enter a value in this field and click the “Set True Time” button.

High Voltage Setting: This is the amount of voltage being sent to the photo multiplier.

Gain Fine: The amplifier gain.

Get Versions: Populates the “DigiBASE Info” box

Enable HV: Turns High Voltage mode on

Disable HV: Turns High Voltage mode off. When High Voltage mode is off, the scanner will not collect any data.

Clear: Clears data from the graphs

Start: Starts logging data. Logging will stop at the end of the True Time interval.

Stop: Stop logging data.

Standard: Choose a standard for a manual calibration.

Export Standard: Save the current data as a calibration for the selected standard.

Calibration

Spectral



Note



Important



Important

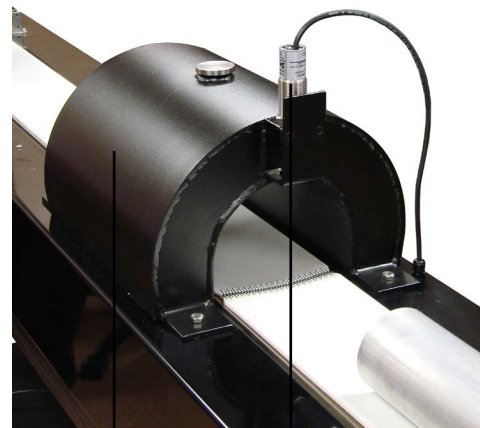
The Gamma Ray Logger should be calibrated with spectral standards once per month, or after the Gamma Ray Logger has been moved. Calibration can also be done more frequently at the user's discretion. During a spectral calibration, the software automatically advances the conveyor belt and scans each of three standards (Potassium, Uranium, and Thorium) for 10,000 seconds each. The total time for the procedure is about nine hours. We recommend starting the test at the end of the day so that it can run overnight.

Always store the Gamma Ray Standards in the horizontal position. Do not stand them up vertically.

The limit switch at the end of the conveyor belt is disabled during calibrations. It will not stop the motor when a core reaches the end of the belt. Before starting the calibration, make sure nothing is on the belt between the shield and the limit switch.

Important Notice Concerning Calibration Standards: There is no globally accepted industry standard or calibration methodology for gamma ray standards for spectral gamma ray loggers. The OFITE Spectral Gamma Ray standards are manufactured to the following concentrations: 100 ppm Uranium, 100 ppm Thorium, and 4.5% Potassium. The standards are manufactured in molecular proportions to achieve these concentrations. In the event that this calibration standard does not meet desired requirements or expectations, please contact OFITE.

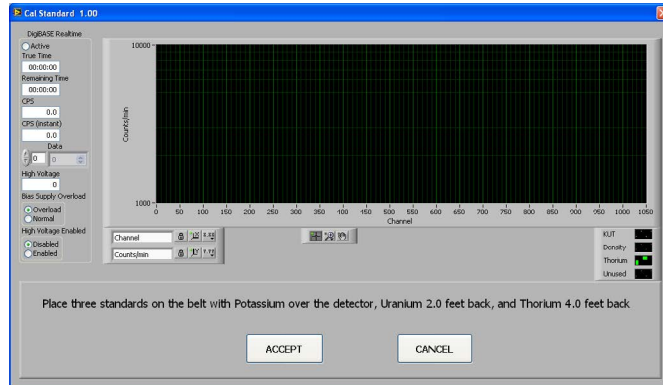
1. Place the three standards on the belt with Potassium first, then Uranium, then Thorium. Place the Potassium standard centered under the shield and leave 12 inches between the standards.



Shield

Height Sensor

2. In the Gamma Ray Logger software, select “Calibrate Spectrum” from the “Utilities Menu”.
3. Click the “Accept” button. The software will scan each standard for 10,000 seconds and the automatically advance the belt to the next standard.
4. When the calibration is complete, click the “Save” button.



Calibration Verification:

1. Run the Spectral Calibration. See page 12.
2. In the software, select “DigiBASE Manual Control” from the “Options” menu.
3. Place the Potassium standard (#700-410-401) on the belt centered under the shield.
4. Set the True Time to 5 minutes and click the “Set True Time” button.
5. Click the “Clear” button.
6. Click the “Start” button.
7. When the test is complete, record the CPS and spectral value for the standard.
8. Repeat steps 3 – 7 with the Uranium (#700-410-403) and Thorium (#700-410-403) standards.
9. Refer to the chart below for acceptable results.

Standard	CPS Min	CPS Max	Spectral Min	Spectral Max
Potassium	5.6	7.64	3.24%	5.34%
Uranium	26.26	28.12	87.28 ppm	108.88 ppm
Thorium	11.8	13.18	84.85 ppm	109.39 ppm

Live Log Spectral Test

To test the repeatability of standard readings in a live logging scenario:

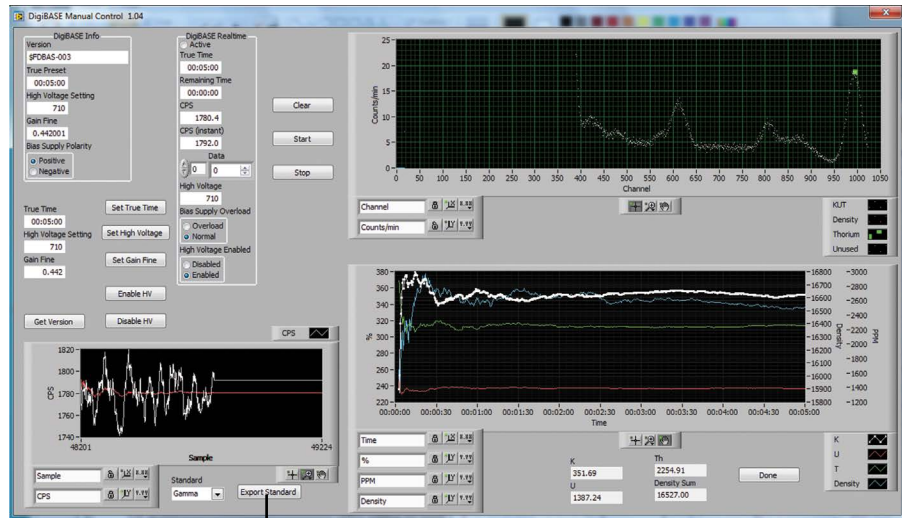
1. Place the Potassium source one foot back from the center of the gamma detector.
2. Place the Uranium source on the belt, leaving a one foot gap to the Potassium source.
3. Change the scan mode to "Spectral Gamma".
4. Start a new test. Name the file "Spectral Gamma Test". Set the Start Depth at 0' and the End Depth at 10 feet.
5. Wait for the 15 minute background scan to complete.
6. As the belt starts moving, wait until there is sufficient space on the belt to place the Thorium standard while allowing a one foot gap to the uranium standard.
7. Remove the standards from the belt as they near the limit switch at the end of the belt. If the limit switch is triggered, the test will be suspended and will not resume until the standard is removed.
8. When the test is complete, open the data file located under C:\Gamma Logger Data\Current Month "\ File Name".
9. Record the reading for the Potassium, Uranium, and Thorium values. These values should be near the 2 foot, and 6 foot depth values, respectively.

Standard	CPS	Acceptance Criteria		Spectral	Acceptance Criteria		Pass
		Min	Max		Min	Max	
Potassium		5.6	7.64		3.24%	5.34%	
Uranium		26.26	28.12		87.28 PPM	108.88 PPM	
Thorium		11.8	13.18		84.85 PPM	109.39 PPM	

Manual Calibration

On the DigiBASE Manual Control screen you can run a manual calibration on a single standard. Refer to page 9 for more information on the Manual Control screen.

1. Select “DigiBASE Manual Control” from the “Options” menu.
2. From the drop-down menu, select the standard you want to calibrate (Potassium, Uranium, Thorium or Gamma API).
3. Enter a value for True Time and click the “Set True Time” button. The standard calibration time is 10,000 seconds (2 hours, 46 minutes, 40 seconds) per standard.
4. Place the standard under the shield.
5. Click the “Start” button to start logging.
6. When the True Time has elapsed, logging will stop automatically. Click the “Export Standard” button to save the calibration.



Export Standard

Calibration

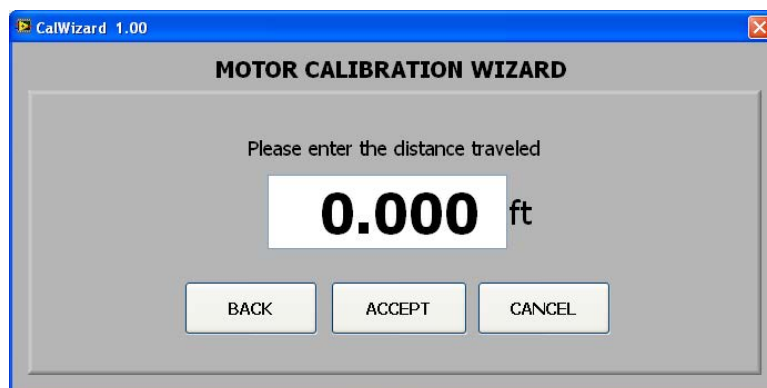
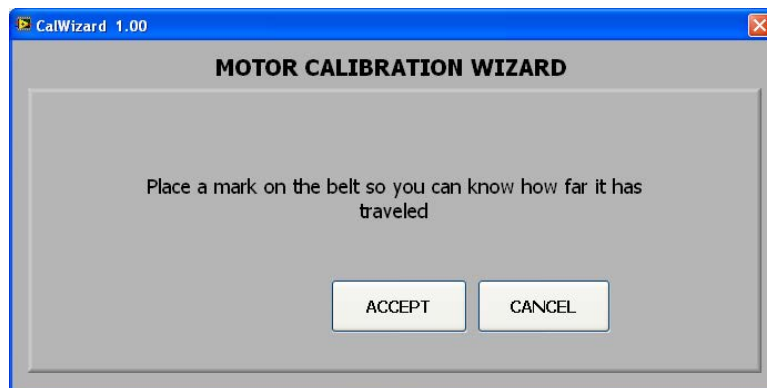
Belt



The belt calibration is performed at the factory, however as the machine ages and the belt stretches, it may be necessary to recalibrate the software to account for the new length. To do this, the operator marks the belt and the conveyor rail. The software advances the belt and then stops. The operator then measures the distance the belt has traveled and records that value in the software.

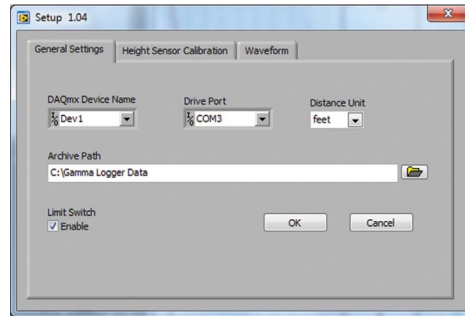
The limit switch at the end of the conveyor belt is disabled during calibrations. It will not stop the motor when a core reaches the end of the belt. Before starting the calibration, make sure nothing is on the belt.

1. In the software, select “Calibrate Belt”.
2. On the side of the belt opposite the limit switches, place a piece of tape on the belt and place a piece of tape on the conveyor rail. Both pieces should line up with each other.
3. Click the “Accept” button.
4. When the belt stops moving, measure the distance between the two marks. The belt will travel approximately 6 feet.
5. Enter the value in the software and click the “Accept” button.



Software Setup

To change the software settings, select “Setup” from the “Options” menu.



DAQmx Device Name: The communication port for the scanner.

Drive Port: The communication port for the motor.

Distance Unit: Choose Feet.

Archive Path: Select a folder to save test data.

Limit Switch: The limit switch at the end of the conveyor belt will stop the motor if a core passes through it during a test. To disable the limit switch, uncheck this box. The limit switch is enabled by default.

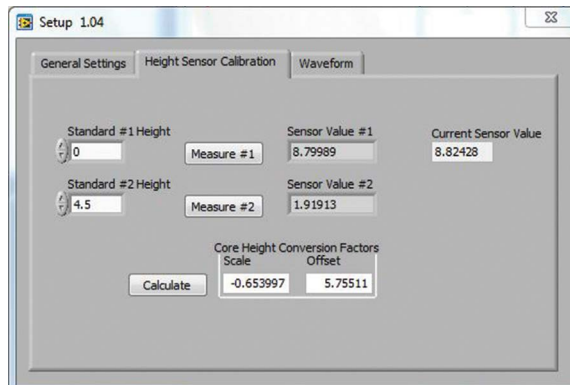
The limit switch is disabled during both spectral and motor calibrations. Before starting a motor calibration, make sure nothing is on the belt. Before starting a spectral calibration, make sure only the three calibration standards are on the belt and that none of them are between the shield and the limit switch.



Core Height Conversion:

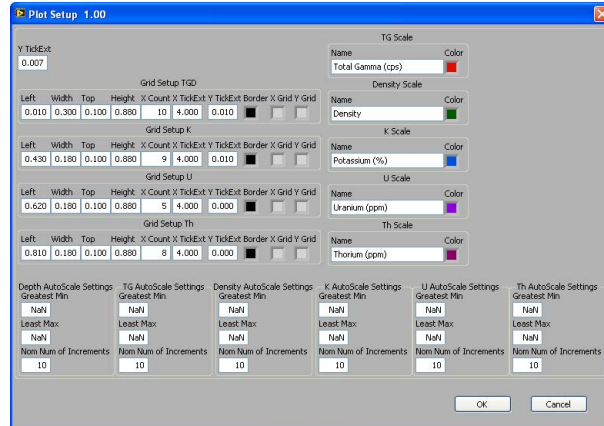
The core height should be calibrated if the height sensor is replaced or the height reading is wrong.

1. Click Options → Setup. Click the Height Sensor Calibration tab.
2. With nothing on the belt, enter 0 in the Standard #1 Height field and click the Measure #1 button.
3. Place the 4.5" Calibration Gauge (#700-410-068) under the scanner.
4. Enter 4.5 in the Standard #2 Height field and click the Measure #2 button.
5. Click the Calculate button to save the calibration.



6. Place the 2.376" Calibration Gauge (#700-410-069) under the scanner. The height should be 2.00" - 2.75". If not, repeat this procedure.

The graph of the data can be customized to fit your needs. Select “Plot Setup” from the “Options” menu.



Y TickExt: The length of the tick marks on the Y-axis.

Grid Setup: The grids for Total Gamma (TGD), Potassium (K), Uranium (U), and Thorium (Th) can be modified separately.

Left: Enter the distance (in pixels) from the left side of the screen.

Width: Enter the width (in pixels) of the graph.

Top: Enter the distance (in pixels) from the top of the screen.

Height: Enter the height (in pixels) of the graph.

X Count: Enter the number of tick marks you want on the X-axis.

X TickExt: The length of the tick marks on the X-axis.

Y TickExt: The length of the tick marks on the Y-axis.

Border: Select a border color.

X Grid: Select a color for the X-axis gridlines.

Y Grid: Select a color for the Y-axis gridlines.

Scale: The Total Gamma (TG), Potassium (K), Uranium (U), and Thorium (Th) scales can be modified separately.

Name: Enter the name of the graph.

Color: Select a color for the graph.

AutoScale Settings: The AutoScale Settings for the Depth, Total Gamma (TG), Potassium (K), Uranium (U), and Thorium (Th) graphs can be changed separately.

Greatest Min: The minimum value on the X-axis will scale to the lowest data point on the graph or the Greatest Min value, whichever is lower. Enter NaN to set it to the lowest data point on the graph.

Least Max: The maximum value on the X-axis will scale to the highest data point on the graph or the Least Max value, whichever is higher. Enter NaN to set it to the highest data point on the graph.

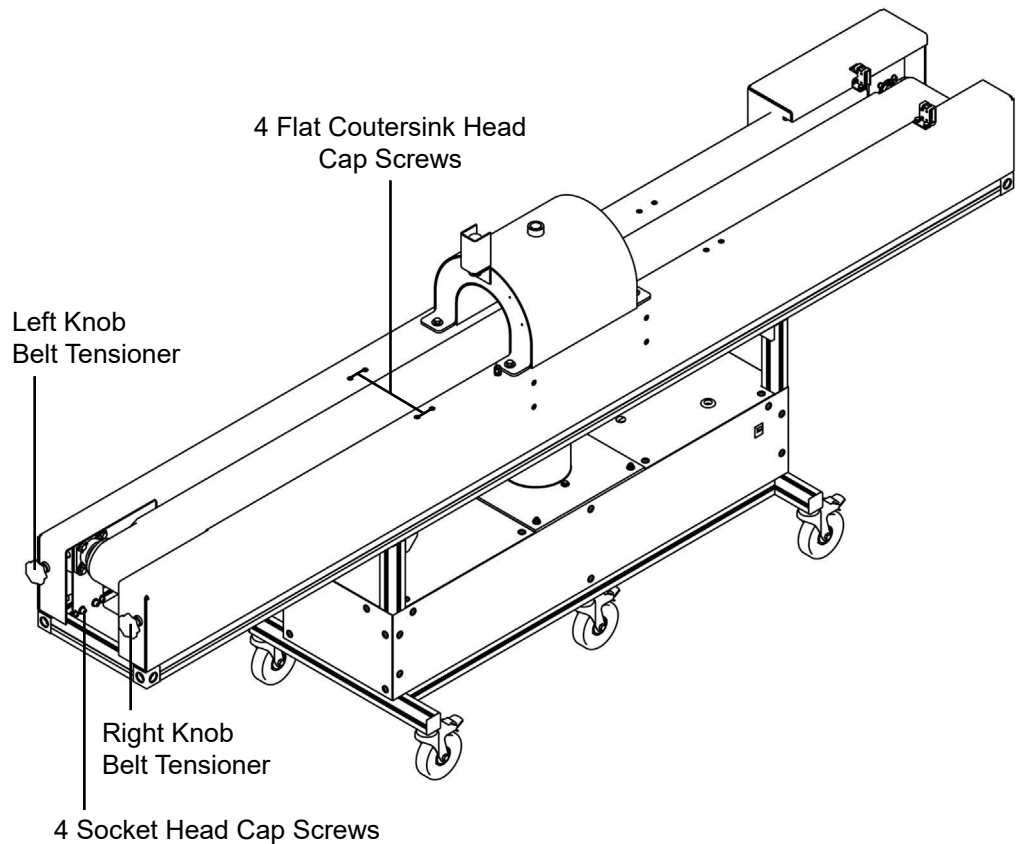
Nom Num of Increments: The number of increments on the Y-axis.

Troubleshooting

Belt Adjustment

Over time, the belt may drift to one side of the conveyor rail. Manual adjustment knobs on the end of the belt can be used to adjust the alignment of the belt and move it back into place.

1. Loosen the four (4) socket head cap screws.
2. Center the conveyor belt by adjusting the two belt tensioner knobs.
 - a. If the belt needs to move towards the right, tighten the belt tensioner knob on the left or loosen the knob on the right.
 - b. If the belt needs to move towards the left, tighten the belt tensioner knob on the right or loosen the knob on the left.
3. Use a torque wrench to re-tighten the four (4) Socket head cap screws to 18 ft-lbs.

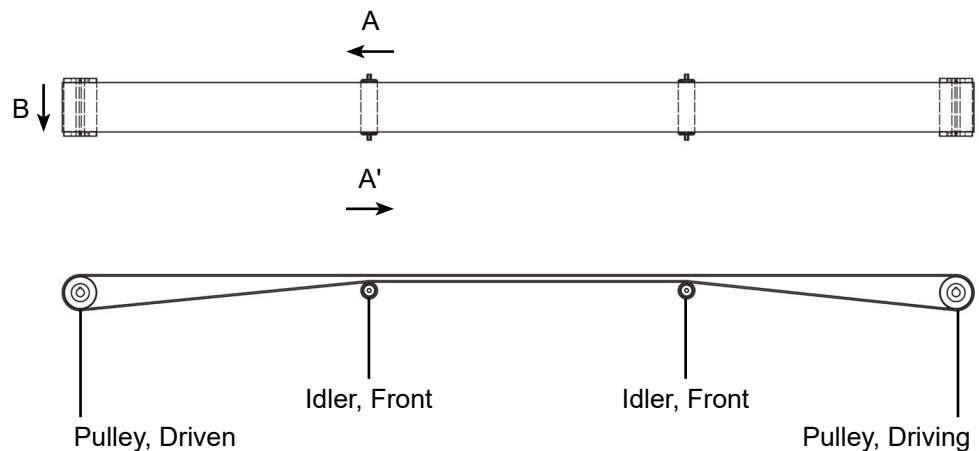


Troubleshooting

Idler Adjustment

If the belt is centered on the drive and guide wheels but not in the middle of the belt, it may be necessary to adjust the idlers.

1. Loosen the four (4) flat countersink head cap screws.
2. Move the front idler in direction A as shown. The conveyor belt will shift in direction B. Moving the idler in direction A' will shift the conveyor belt the other direction.
3. Use a torque wrench to re-tighten the four (4) flat countersink head cap screws to 11 ft-lbs.



Troubleshooting

Limit Switch

The limit switch at the end of the conveyor belt will stop the motor if a core passes through it during a test. If the belt does not stop when a core reaches the end of the belt, check the following:

1. The limit switch is disabled during both spectral and motor calibrations. Make sure the software is in Test mode and not Calibration mode.
2. Turn the Limit Switch option on. See page 17.
3. Confirm the size of the core. The limit switch will not detect cores smaller than 2" in diameter. If the core is less than 2" in diameter, the operator must remove it manually before it reaches the end of the belt.
4. Check sensor operation:
 - a. During normal operation a red light on the transmitter and green light on the receiver should both be on. If one or both is not on, the system must be serviced by an OFITE technician.

Troubleshooting

Belt Speed

- b. If both lights are on, move your hand in front of the sensor. A red light on the receiver should turn on when the sensor is blocked and turn off when the sensor is cleared. If not, the system must be serviced by an OFITE technician.
5. Clean the sensor:
 - a. If the green light on the receiver and the red light on the transmitter are both on and a red or orange light on the receiver is on, the sensor is activated. Check for dirt or debris on the sensor and clean it if necessary. If the light remains on, the system must be serviced by an OFITE technician.
 6. Check the sensor alignment:
 - a. The transmitter projects a visible red light. When both sensors are in alignment, loosen the mounting bracket on the transmitter and adjust its position.

To confirm the speed of the belt:

1. Measure the length of the belt.
2. Run the Belt Calibration. See page 16.
3. Add an evenly distributed load of 150 lb. to the conveyor belt.
4. Place a mark on the belt and another on the conveyor rail.
5. Set the belt speed to 3.8 ft/min and start the motor (see page 6).
6. Record the time it takes the mark on the belt to travel one complete revolution.
7. Set the belt speed to 6.33 ft/min and start the motor.
8. Record the time it takes the mark on the belt to travel one complete revolution.
9. Calculate the belt speed:
$$\text{Speed} = \text{time (min)} / \text{belt length (ft)}$$
10. If the calculated speed is 5% over or under the set speed, adjust the belt tension (see page 21) and repeat steps 6 – 10.

Maintenance

1. Inspect the conveyor belt when the system is shut down and empty. This allows you the check for any damage to the belt or splice. Check for the following:
 - a. Pulley free from build-up and trapped material.
 - b. Pulley free from damage.
 - c. No Skirting on the loading area.
 - d. No Impact Bed or Impact Idler damage.
 - e. Slider Bed clean and smooth.
 - f. Idler free from damage.
 - g. No frame damage.
 - h. Return idlers are clean and turn freely.
 - i. Damage to return side frame due to mis-training.
2. Turn the conveyor belt on and run it empty. Check for any tracking problems with the belt.
3. Before making any tracking adjustments, run the system when loaded. Empty belts and loaded belts may track differently.
4. Turn the conveyor belt on and run it loaded. Check for the following:
 - a. Turning freely without bearing noise, product build-up, or carry back.
 - b. Belt tracking correctly
 - c. Carry Side Idler turning freely.
 - d. Head Pulley and or Drive Pulley running smoothly.



Note

Warranty and Return Policy

Warranty:

OFI Testing Equipment, Inc. (OFITE) warrants that the products shall be free from liens and defects in title, and shall conform in all respects to the terms of the sales order and the specifications applicable to the products. All products shall be furnished subject to OFITE's standard manufacturing variations and practices. Unless the warranty period is otherwise extended in writing, the following warranty shall apply: if, at any time prior to twelve (12) months from the date of invoice, the products, or any part thereof, do not conform to these warranties or to the specifications applicable thereto, and OFITE is so notified in writing upon discovery, OFITE shall promptly repair or replace the defective products. Notwithstanding the foregoing, OFITE's warranty obligations shall not extend to any use by the buyer of the products in conditions more severe than OFITE's recommendations, nor to any defects which were visually observable by the buyer but which are not promptly brought to OFITE's attention.

In the event that the buyer has purchased installation and commissioning services on applicable products, the above warranty shall extend for an additional period of twelve (12) months from the date of the original warranty expiration for such products.

In the event that OFITE is requested to provide customized research and development for the buyer, OFITE shall use its best efforts but makes no guarantees to the buyer that any products will be provided.

OFITE makes no other warranties or guarantees to the buyer, either express or implied, and the warranties provided in this clause shall be exclusive of any other warranties including ANY IMPLIED OR STATUTORY WARRANTIES OF FITNESS FOR PURPOSE, MERCHANTABILITY, AND OTHER STATUTORY REMEDIES WHICH ARE WAIVED.

This limited warranty does not cover any losses or damages that occur as a result of:

- Improper installation or maintenance of the products
- Misuse
- Neglect
- Adjustment by non-authorized sources
- Improper environment
- Excessive or inadequate heating or air conditioning or electrical power failures, surges, or other irregularities
- Equipment, products, or material not manufactured by OFITE
- Firmware or hardware that have been modified or altered by a third party
- Consumable parts (bearings, accessories, etc.)

Returns and Repairs:

Items being returned must be carefully packaged to prevent damage in shipment and insured against possible damage or loss. OFITE will not be responsible for equipment damaged due to insufficient packaging.

Any non-defective items returned to OFITE within ninety (90) days of invoice are subject to a 15% restocking fee. Items returned must be received by OFITE in original condition for it to be accepted. Reagents and special order items will not be accepted for return or refund.

OFITE employs experienced personnel to service and repair equipment manufactured by us, as well as other companies. To help expedite the repair process, please include a repair form with all equipment sent to OFITE for repair. Be sure to include your name, company name, phone number, email address, detailed description of work to be done, purchase order number, and a shipping address for returning the equipment. All repairs performed as "repair as needed" are subject to the ninety (90) day limited warranty. All "Certified Repairs" are subject to the twelve (12) month limited warranty.

Returns and potential warranty repairs require a Return Material Authorization (RMA) number. An RMA form is available from your sales or service representative.

Please ship all equipment (with the RMA number for returns or warranty repairs) to the following address:

OFI Testing Equipment, Inc.
Attn: Repair Department
11302 Steeplecrest Dr.
Houston, TX 77065
USA

OFITE also offers competitive service contracts for repairing and/or maintaining your lab equipment, including equipment from other manufacturers. For more information about our technical support and repair services, please contact techservice@ofite.com.